



AutoForecastSolutions

# AFS Services

## Market Alerts

**Joseph McCabe, President**  
**855.734.4590 ext. 1001**

# AFS Services – Market Alerts

**Industry Insight:** Market Alerts are designed to notify and educate our customers on market changes, key industry issues that shape critical decision making, and general market news to support a proactive business model.

AFS Market Alerts include:

- **AFS Weekly:** Manufacturing changes, vehicle timing, new vehicles, & cancelled vehicles
- **AFS Monthly:** Editorial on market issues shaping the region, the global, & the industry
- **AFS Vision:** Detailing a specific market disruption issue. Overview, insight, and impact
- **AFS AutoShow Review (ASR):** Images, specs, & reviews of announced vehicles at the major, global auto shows
- **AFS Code Books:** Directory of vehicles by platform, program, timing, and more (with AFS Forecast subscription only)

**Frequency:** Sent via email and accessible from the AFS Forecast web-interface on a weekly, monthly, and periodic basis

**Support:** Created by the team of AFS subject matter experts who are available to discuss the content of each report in terms of its impact on your business.

The following slides provide an overview of deliverables you should expect from AFS to support your AFS Forecast subscription.

*In a constant effort to improve both our services and your experience with AFS, we welcome your input on these and other deliverables you wish to see. Please contact us at any time.*

# GLOBAL AUTOMOTIVE PRODUCTION FORECASTING

- Vehicle
- Engine
- Transmission
- Alternative Propulsion
- Drivetrain
- Advisory Services



 8 Year Outlook  
Updated Monthly

 Detailed with Attributes

 Over 25 Years of Experience

 Concierge-level Support

## Improve Your Competitiveness

- Opportunity Identification
- Better Decision Support
- Revenue Growth

AutoForecastSolutions.com

Data That Drives Tomorrow

**AutoForecast Solutions (AFS)** is the only fully integrated solutions provider of **vehicle, powertrain, and drivetrain production forecasting, business planning software, and advisory services** to the global automotive industry.



AFS helps our customer...

**Understand** the opportunities

**Develop** a value proposition to defend core operations

**Identify** areas for growth.

A comprehensive view of the past, current, and future global automotive electrified market



**Includes: Images, specs, details, and more!**

☒ Show Chart
 ☐ Show Volume

Start Window: 2021Q3 End Window: 2022Q3 Vehicle Type: Car and Light Truck Segment: All

Region: All Plant Country: All VM: All Plant: All

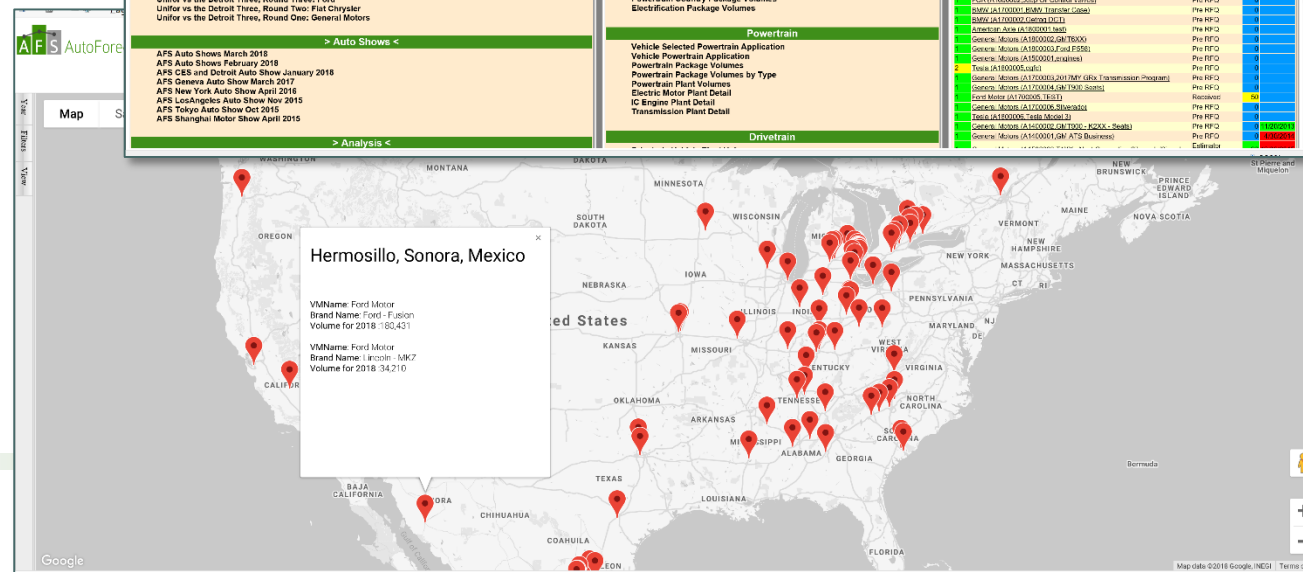
Brand Owner: All Brand: All Nameplate: All

Platform Designer: All Platform: All Program: All

Use SOP/SORP: SOP Date Sort Order: Brand Owner, Brand Name, Date Volume Type: Auto/f, forecast, Solutions (A)

☒ Show Life Cycle Avg Annual Vols
 ☐ Show Kivy
 ☐ Show Vehicle Type
 ☐ Show Segment Type: HTML

Region	Model Name	Brand Name	Nameplate Name	Program Name	Platform Name	Plant Name	Plant Country	State/Territory	Brand Owner Name	RDP	SOP	EOP	Midcycle Ave Annual Vol.	2024	2025	2026	2027	2028	2029
ASIA-PACIFIC	Ashok Leyland/Nissan	Ashok Leyland	Dost	C22-2	SCV	Hosur	India	Tamil Nadu	Ashok Leyland	2021/10	2021/10	2021/9	46255						
WESTERN EUROPE	Asan Martin	Asan Martin	Valkyrie	AMRIB-003	MonoCell	Gaydon	United Kingdom	Wales/Westshire	Asan Martin	2021/10	2021/10	2021/9	83						
ASIA-PACIFIC	BAIC-Yinxiang	Bisu	M3	CH20-2	BC300	Zhongzhang 2	China	Chongqing	BAIC-Yinxiang	2022/4	2022/4	2028/3	581						
ASIA-PACIFIC	BAIC Moler	Beijing	BJ20	B20-2	GMZ6000/22000	Chengjia	China	Jiangsu	Beijing Automotive Group	2022/6	2022/6	2028/5	11624						
ASIA-PACIFIC	Blue Sky NEV	BUYE	AO Sedan	N51	BE21	Zhenjiang	China	Jiangsu	Beijing Automotive Group	2022/4	2022/4	2030/12	16123						
ASIA-PACIFIC	Blue Sky NEV	BUYE	BU SUV	BE21	BE21	Zhenjiang	China	Jiangsu	Beijing Automotive Group	2022/4	2022/4	2030/12	15929						
ASIA-PACIFIC	Beifol Foton	Borgward	BOX	ST00-2	BSN	Myran	China	Beijing	Beijing Automotive Group	2022/4	2022/4	2030/12	11623						
ASIA-PACIFIC	Beifol Foton	Foton	MP-X	G-2	G	Myran	China	Beijing	Beijing Automotive Group	2021/7	2021/7	2028/6	8866						
ASIA-PACIFIC	Beifol Foton	Foton	Tundun L	P201-2	26ST	Myran	China	Beijing	Beijing Automotive Group	2021/10	2021/10	2031/9	20237						
ASIA-PACIFIC	United Motors	Foton	Tundun L	P201-2	26ST	Gateway	Thailand	Chaohongchi	Beijing Automotive Group	2021/10	2021/10	2031/9	16123						
ASIA-PACIFIC	HAUAI Yinxing	Huanou	H5	CH20-2	CH20-2	Chongchong 1	China	Chongqing	Beijing Automotive Group	2022/4	2022/4	2028/3	18403						
ASIA-PACIFIC	BAIC-Yinxiang	Huanou	H6	SE0-2	Mc-Trix	Chongchong 1	China	Chongqing	Beijing Automotive Group	2021/9	2021/9	2027/8	2156						
ASIA-PACIFIC	BAIC Motor	Shenbao/Senvo	X25	C20B-2	2-Car	Beijing	China	Beijing	Beijing Automotive Group	2022/3	2022/3	2032/2	22887						
ASIA-PACIFIC	BAIC Motor	Shenbao/Senvo	X55	CS1A-2	Mc-Trix	Beijing	China	Beijing	Beijing Automotive Group	2022/4	2022/4	2028/3	5811						
ASIA-PACIFIC	BAIC Motor	Weiweng	BC05	BC05-2	GMZ6000/22000	Guangdong	China	Guangdong	Beijing Automotive Group	2022/6	2022/6	2027/5	11151						
ASIA-PACIFIC	BMW	Weiyoung	BMW i5	SA1-2	GMZ6000/22000	Guangdong	China	Guangdong	Beijing Automotive Group	2022/3	2022/3	2028/3	49032						
WESTERN EUROPE	BMW	BMW	2-Series Active Tourer	L06	FARR WE	Leipzig	Germany	Saxony	BMW	2021/10	2021/10	2028/6	9635						
ASIA-PACIFIC	BMW Brilliance	BMW	2-Series Active Tourer	L06	FARR WE	Shenyang 2	China	Liaoning	BMW	2021/11	2021/11	2029/12	9635						
NORTH AMERICA	BMW	BMW	2-Series Coupe	G42/G8T	UK	San Luis Potosi	Mexico	San Luis Potosi	BMW	2022/8	2021/8	2028/8	28867						
WESTERN EUROPE	BMW	BMW	4-Series Gran Coupé	G26	UK	Munich	Germany	Bavaria	BMW	2021/8	2021/8	2027/8	58867						
WESTERN EUROPE	BMW	BMW	7-Series	G73/G71	CLR WE	Munich	Germany	Bavaria	BMW	2022/7	2022/7	2028/6	58834						
WESTERN EUROPE	BMW	BMW	i5	G23	I	Leipzig	Germany	Bavaria	BMW	2021/7	2021/7	2028/6	6083						

[illegible]



# AFS Weekly

Volume 6, Number 9

March 04, 2019



## Executive Summary

	Company:	Assembly Location:	Nameplate (Platform Program):	New SOP:	New EOP:	Vkey:
<b>Asia-Pacific Production</b>						
<b>UPDATE</b>	FAW Volkswagen	Chengdu (China)	Jetta VA3 (A04/PQ24mod   DY/BC311/BC313)	6/3/2019	12/24/2026	8670
	FAW Volkswagen	Chengdu (China)	Jetta VS5 (A04/PQ24mod   DY/BC316)	6/4/2019	12/24/2026	12432
	FAW Volkswagen	Chengdu (China)	Jetta VS7 (A04/PQ24mod   DY/BC316/2)	7/1/2019	12/24/2031	12674
<b>Eastern European Production</b>						
<b>CANCELLED</b>	Honda Motor	Gebze (Turkey)	Honda Civic (CCA   2YN)			
<b>North American Production</b>						
<b>UPDATE</b>	FCA	Warren Truck (United States)	Jeep Grand Wagoneer (DT   WS)	3/29/2021	4/30/2026	6571
	General Motors	Detroit-Hamtramck (United States)	Chevrolet Impala (Global Epsilon   GMX352)	3/18/2013	1/31/2020	5949
	General Motors	Detroit-Hamtramck (United States)	Cadillac CT6 (Omega   O1SL/7ESL)	1/18/2016	1/31/2020	6702
<b>SHUTDOWN</b>	FCA	Toledo Supplier Park (United States)				
	Ford Motor	Chicago (United States)				
<b>OVERTIME</b>	FCA	Bramalea (Canada)				
	FCA	Jefferson North (United States)				
	FCA	Saltillo Van (Mexico)				
	FCA	Toledo North (United States)				
	FCA	Toluca (Mexico)				
	Ford Motor	Flat Rock (United States)				
	Ford Motor	Kansas City 1 (United States)				
	Ford Motor	Kentucky Truck (United States)				
	Ford Motor	Louisville (United States)				
	Ford Motor	Michigan Assembly (United States)				
	Ford Motor	Oakville (Canada)				
	Ford Motor	Ohio Assembly (United States)				



AutoForecast Solutions LLC  
[www.autoforecastsolutions.com](http://www.autoforecastsolutions.com)  
 Phone: (855) 734-4590 ext 1003  
 Sam Fiorani, Editor, [sfiorani@autoforecastsolutions.com](mailto:sfiorani@autoforecastsolutions.com)

Data that drives tomorrow.

Volume 6, Number 9 - Page ES-1

## AFS Weekly Includes:

**NEW:** The addition of a vehicle program and/or assembly plant highlights a significant new product.

**UPDATED:** An existing vehicle that has been modified with new SOP/EOP dates, program or platform name changes, a change in assembly location, or changes in work days.

**CANCELLED:** A vehicle that has been dropped from the forecast and removed from a manufacturer's future plans.

**SHUTDOWN:** A currently produced vehicle with planned downtime.

**OVERTIME:** A currently produced vehicle with planned overtime.

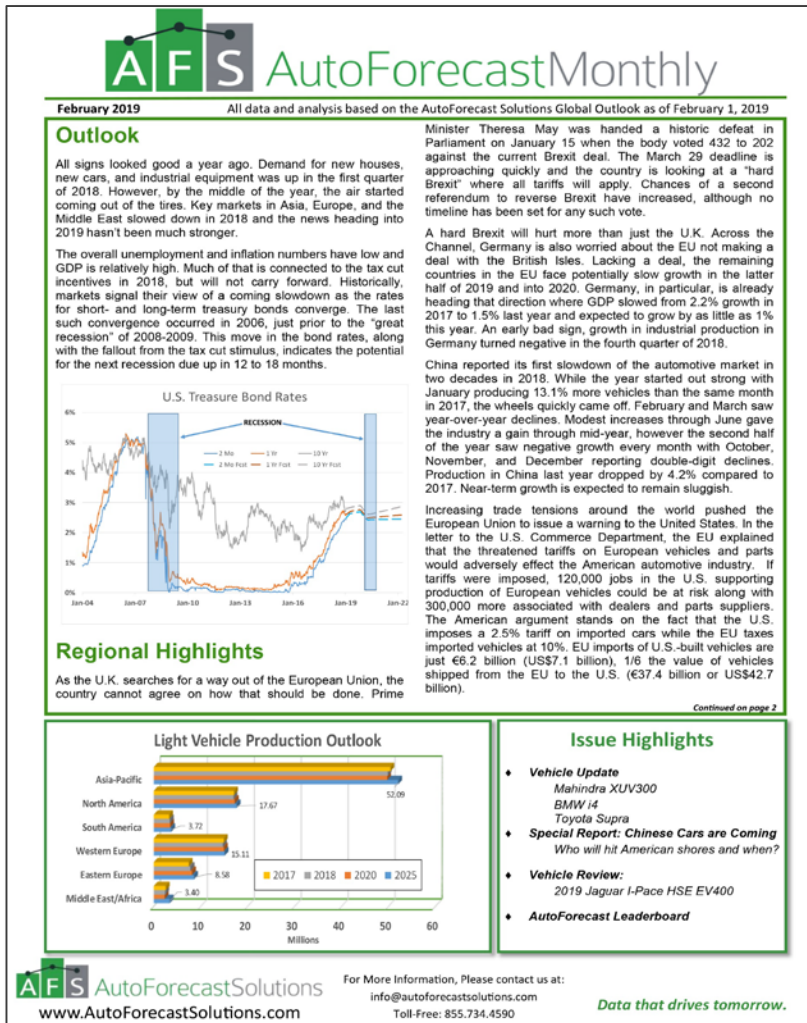
**LABOR RELATIONS:** Any contract negotiations or problems with work force or unions that could affect production will be highlighted, along with shift additions or eliminations.

Delivered every Monday as part of your AFS Market Alerts or AFS Forecast Subscriptions.



Data that drives tomorrow.  
[support@autoforecastsolutions.com](mailto:support@autoforecastsolutions.com)  
 855.734.4590

# AFS Market Alerts: AFS Monthly



## AFS Monthly Includes:

This monthly distributed document highlights the key issues impacting the AFS global automotive production forecast.


### TOPICS INCLUDE:

- Global, regional, and industry issues shaping the outlook
- Detailed analysis by country, vehicle, powertrain, and timely topics that support opportunity identification and revenue growth
- Short-, mid-, and long-term global production outlooks
- Key performance indicators
- Global vehicle production ranking reports
- U.S. light vehicle sales analysis

The volatility of today's global automotive industry requires timely insight for better decision making. AFS Services are designed to improve the competitiveness of our clients. Creating a proactive environment to strengthen core operations while identifying opportunities for revenue growth.

Delivered Monthly as Part of your AFS Market Alerts or AFS Forecast Subscriptions.

# AFS Market Alerts: AFS Vision



December 3, 2018

Analysis exclusively provided to AutoForecast Solutions customers

## Analysis: GM November 2018 Announcement

### Overview

During the "great recession," General Motors fled thinking at the time was to remove redundant plants, Pontiac and Saturn. Cuts were rather surgical and the industry returned.

A decade has passed and GM's decisions were a products, GM had the Chevrolet Volt hybrid, Chevy Regal and Chevrolet Malibu mid-sized sedans, the ready. Unfortunately, buyers shifted toward trucks and

GM has taken the current window of opportunity, just three vehicle plants "will be unallocated" of vehicles the UAW contract talks beginning next summer. Oshawa (Ontario) closing in 2019. Removing these


The cancellation of most of GM's U.S. - and Canada production for the Cadillac XTS and Chevrolet Impaler buyers, mostly fleets, dissipate. The slow-sell expected to limp along through their current gap

Closure of these plants affects the aforementioned remain in Mexico while the Buick LaCrosse and Camaro likely, prevent importation of the LaCrosse and

General Motors announced its intention to reduce closures includes 2,900 in Canada and 3,805 in the transfer to remaining facilities, however about 8,100 offered early retirement to 18,000 employees, but involuntary layoffs will be needed to reach the current

Plant	Vehicle Capacity (Two-shifts/straight time)	2018
Detroit-Hamtramck (Michigan)	140,000	
Lordstown (Ohio)	332,000	
Oshawa 1 & 2 (Ontario)	621,000	
Baltimore	-	
Warren Transmission	-	

Table 1



December 3, 2018

Even after the announced closures, General Motors still has a number of under performing plants and potentially too many cars. Light trucks, defined as pickups, vans, sport-utilities, and crossovers, have been steadily taking over the U.S. market for the last decade, leaving traditional cars in the dust. Ford and FCA previously announced their intention to eliminate most car production from North America and the GM announcement just narrows the gap with its rivals.

GM's shift from passenger cars to trucks continues (Figure 1). In 2007, General Motors produced 23 car nameplates in North America. By 2020, the car count will fall to just 10 nameplates. Volume of car production dramatically falls from just over 1.5 million to 445,000 over the same timeframe.

As GM fills in the holes in its light truck lineup, some existing plants will be better utilized. Luxury crossovers such as Cadillac's XT4 and upcoming XTE will fill empty space at Fairfax and Spring Hill. Chevrolet is adding the mid-sized Blazer at their Ramos Arizpe plant in Mexico. The company still has room for future light trucks in North America, especially if importing models like the Buick Encore and Envision becomes too expensive due to tariffs.

### Impact Analysis


There are North American plants that could use the additional volumes from those imported vehicles (Figure 2). Orion is planned to become the electric and autonomous vehicle plant for GM, however those products will not fill the plant. Lansing Grand River is also a focused plant with too little planned product expected. In Kansas, the Fairfax plant makes the Chevrolet Malibu sedan along with the Cadillac XT4 compact crossover, which will not be enough to fill the large facility. Unique among GM's light-truck plants, Lansing Delta Township has a significant amount of excess capacity in the AFS forecast window.

Figure 2 - The blue area at the bottom shows all of the light truck (pickup, van, utility) nameplates, while all other colors represent all GM individual passenger car nameplates in North America.

Figure 1

On the powertrain side, only the loss of Warren Transmission's front-drive 6-speed affects a remaining product. Used on the GMC Acadia, the 6T70/75 6-speed will be replaced by a 6-speed. GM's 9T60 transmission is only found in hybrids and with the end of the Volt, the Chevrolet Malibu Hybrid will be updated with a different hybrid system. The 6-speed automatic, found in the heavy-duty versions of the Silverado and Sierra pickups, will be replaced as the new 10-speed spreads out across the lineup.


In 2019, the United Auto Workers will open up contract negotiations with Ford, FCA, and General Motors. With these five plants "unallocated" after 2019, the union will look to "save" one or more of the plants from closure. The likelihood of any remaining open is very small due to the ongoing excess capacity issues at GM. Compounding these troubles is the push by the Trump Administration to locate more product into U.S.-based plants, especially from



For More Information, Please contact us at:

info@autoforecastsolutions.com

Toll-Free: 855.734.4590



## AFS Vision Includes:

**An analysis of major automotive events impacting the manufacturing footprint and business plans for industry stakeholders.**

**THE ISSUE:** First step is to summarize the issue in a concise way in order to frame the impact on the industry.

**THE IMPACT:** Second is to analyze the information and provide insight into the impact on the industry, the supply base, the consumer, and the economy.

**FUTURE IMPLICATIONS:** AFS always looks at the data in terms of how it will affect our customers in short- and long-term. For example:

- An AFS Vision report focused on GM's announcement of plant closures provided an overview of the topic, but went further to analyze the ramifications of the decision.
- By diving deeper into the analysis, It was determined that four additional GM plants are also underutilized. This could have a future impact on production capacity and create a ripple effect for the supply base.
- AFS highlighted the production capacity of these plants in an effort to provide visibility into the additional concerns.

**VALUE-ADD:** The concept is simple, AFS helps transform your operations from a traditionally reactive business model, to a proactive one. Targeted analysis supports this critical initiative for improved opportunity identification and revenue growth.

Delivered Periodically as part of your AFS Market Alerts or AFS Forecast Subscriptions.



# AFS Market Alerts: AFS AutoShow Review (ASR)

**AFS** AutoForecast Solutions

**AUTO SHOW REVIEW**

March 2019

Supplement to the AutoForecast Solutions Global Outlook

**European Motor Show, Brussels**  
January 19-January 27, 2019

**Ford Mondeo Clipper Hybrid**



Ford's mid-sized Mondeo, known as the Fusion in North America, gets its first facelift since entering production in 2014. Updated front and rear, the new Mondeo receives new bumpers, headlights, taillights, and a bit more chrome. In addition to the sedan, the hybrid power is finally offered on the station wagon. Under the hood is Ford's 2.0L four-cylinder joined with an electric motor and a 1.4kWh battery pack.

**Hyundai i40**



Updates to the large Hyundai sedan and wagon include new front end styling and a new diesel engine. Hyundai's SmartSense includes Forward Collision Avoidance Assist, which alerts the driver of an emergency and can apply the brakes if needed. A new Smartstream 1.6L turbodiesel produces 113hp or 134hp and offered with a manual or dual-clutch transmission.

**Land Rover Range Rover Evoque**



An evolutionary design updates the oldest model in the Range Rover line, available in standard and sportier R-Dynamic trim. Gone are the two-door and convertible models leaving just the four-door. Inside, the infotainment system gets a 12.3-inch touchscreen along with a heads-up display and audio supplied by Meridian. Under the hood is the JLR Ingenium 2.0L turbocharged four-cylinder engine in either 246hp or 296hp forms. A new Hybrid model adds in a 48-volt belt-alternator system. All-wheel drive is standard on all versions. Sales begin in the spring.

**Nissan NV300 Concept**



The commercial side of Nissan has been growing over the last few years and this year the attention is on the big NV300. In this concept, Nissan has stocked up the cargo van with all of the things a woodworker might need. Since woodworking goes better with electricity, a recycled Nissan Leaf battery pack has been stashed inside and powered by solar panels. This Energy Pack holds 700Wh and can produce up to 1kW of power.

Continued on page 2

**AFS** AutoForecast Solutions  
www.AutoForecastSolutions.com

For More Information, Please contact us at:  
info@autoforecastsolutions.com  
Toll-Free: 855.734.4590

*Data that drives tomorrow.*

## AFS ASR Includes:

**A summary of vehicle introductions/updates at major global auto shows:**

- Images
- Specs
- Vehicle reviews



**Recent shows covered include:**

- Geneva
- North America International Auto Show
- Los Angeles
- New York
- Shanghai

Delivered Periodically as part of your AFS Market Alerts or AFS Forecast Subscriptions.



# AFS Code Books

 						
Vehicle Manufacturer	Vehicle Platform	Vehicle Program	Brand / Nameplate	Assembly Location	SOP	EOP
BMW	CLAR WE	G45	BMW X3	Spartanburg, United States	12/4/2023	11/29/2030
BMW	L2	F25	BMW X3	Spartanburg, United States	10/4/2010	9/8/2017
		F26	BMW X4	Spartanburg, United States	6/3/2013	3/30/2018
BMW	L4	E71/E72	BMW X6	Spartanburg, United States	2/4/2008	7/31/2014
		F15/F85	BMW X5	Spartanburg, United States	9/3/2012	7/2/2018
		F16/F86	BMW X6	Spartanburg, United States	10/1/2013	7/26/2019
BMW	LG	G05/F95	BMW X5	Spartanburg, United States	10/2/2017	7/31/2026
		G06/F96	BMW X6	Spartanburg, United States	6/4/2018	3/31/2027
		G07	BMW X7	Spartanburg, United States	12/4/2017	7/31/2025
		G09	BMW X8	Spartanburg, United States	8/1/2022	1/28/2028
		G67	BMW X7	Spartanburg, United States	8/4/2025	7/30/2032
BMW	LK	G01/F97	BMW X3	Spartanburg, United States	10/3/2016	11/29/2023
		G02/F98	BMW X4	Spartanburg, United States	4/3/2017	7/31/2024
		G20/G21/G28/G80	BMW 3-Series	San Luis Potosi, Mexico	4/1/2019	3/31/2026
		G42/G87	BMW 2-Series Coupe	San Luis Potosi, Mexico	8/2/2021	8/31/2029
		G46	BMW X4	Spartanburg, United States	8/1/2024	7/31/2031
COMPAS	MFA	N71A	Infiniti QX50 Coupe	Aguascalientes, Mexico	12/2/2019	1/30/2026
		P71A	Infiniti QX50	Aguascalientes, Mexico	11/1/2017	11/30/2023
		P71A-2	Infiniti QX50	Aguascalientes, Mexico	12/4/2023	11/30/2029
COMPAS	MFA2	V177	Mercedes-Benz A-Class Sedan	Aguascalientes, Mexico	1/2/2018	12/24/2024
		X247	Mercedes-Benz GLB	Aguascalientes, Mexico	7/1/2019	6/30/2026
COMPAS	MX1	V177-2	Mercedes-Benz A-Class Sedan	Aguascalientes, Mexico	1/2/2025	12/24/2031
Daimler	MHA	C167	Mercedes-Benz GLE Coupe	Tuscaloosa, United States	5/1/2018	9/30/2026
		W167/V167	Mercedes-Benz GLE	Tuscaloosa, United States	3/1/2017	12/24/2025
		X167	Mercedes-Benz GLS	Tuscaloosa, United States	10/2/2017	3/31/2026
Daimler	MHA/EVA2	X294-EVA2	Mercedes-Benz EQGLE	Tuscaloosa, United States	10/3/2022	9/28/2029
		X296	Mercedes-Benz EQGLS	Tuscaloosa, United States	4/4/2022	3/30/2029
Daimler	MRA	W205/S205/V205	Mercedes-Benz C-Class	Tuscaloosa, United States	10/1/2013	5/28/2021
Daimler	VS30	VS30	Mercedes-Benz Sprinter	North Charleston, United States	6/4/2018	12/22/2028
			Freightliner Sprinter	North Charleston, United States	7/2/2018	12/22/2028
Daimler	W164/W166	C292	Mercedes-Benz GLE Coupe	Tuscaloosa, United States	7/1/2014	8/30/2019
		V251	Mercedes-Benz R-Class	Tuscaloosa, United States	1/3/2005	7/31/2015
		W166	Mercedes-Benz GLE/M-Class	Tuscaloosa, United States	11/1/2010	9/28/2018

October 2018 - R1810

Copyright © 2018 AutoForecast Solutions LLC. - All rights reserved.

Data that drives tomorrow.

Page 1 of 14

## AFS Code Books Include:

A directory of vehicles produced by subscribed region

**VEHICLE STRUCTURE:** Historical, current, and future. Listed by:

- Vehicle Manufacturer
- Vehicle Platform
- Vehicle Program
- Brand/Nameplate
- Assembly Location
- Start of Production (SOP)
- End of Production (EOP)

**REGIONAL:** One PDF per subscribed region. Global data consists of six (6) separate regions and documents:

- North America
- South America
- Western Europe
- Eastern Europe
- Asia-Pacific
- Middle-East/Africa

Delivered Monthly. Requires an AFS Forecast Subscription.

# Thank You from the AFS Leadership Team



Contact the AFS team for more information and a free demonstration:

[ePowerPack@AutoforecastSolutions.com](mailto:ePowerPack@AutoforecastSolutions.com)

855.734.4590 ext. 1001